



Taking the Reigns on Your Workforce Ecosystem

June 20, 2014

SUZANNE SMITH

SOCIAL IMPACT ARCHITECTS
SUZANNE@SOCIALIMPACTARCHITECTS.COM



ERIC GRIFFIN

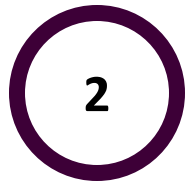
WORKFORCE SOLUTIONS
GREATER DALLAS
EGRIFIN@WFSDALLAS.COM

WORKFORCE SOLUTIONS
GREATER DALLAS

Today's Agenda



How does ecosystem mapping help communities?



What process can you follow?



Greater Dallas' Experience



Ecosystem Mapping

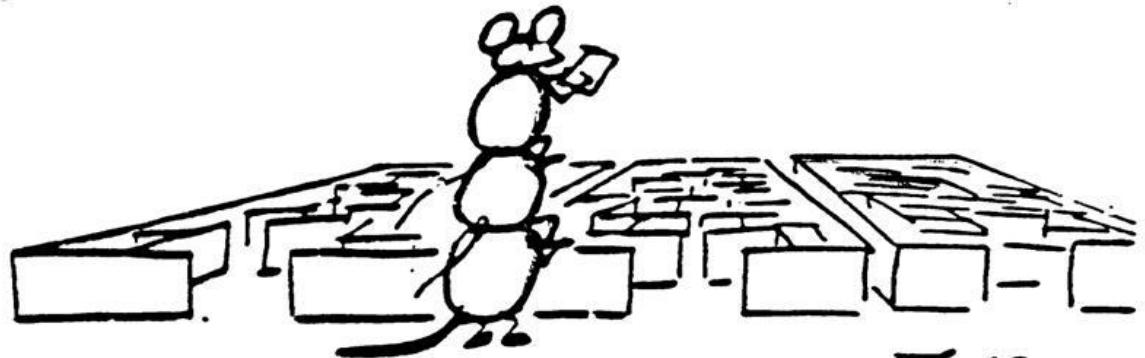
Individual Effort



Collective Impact



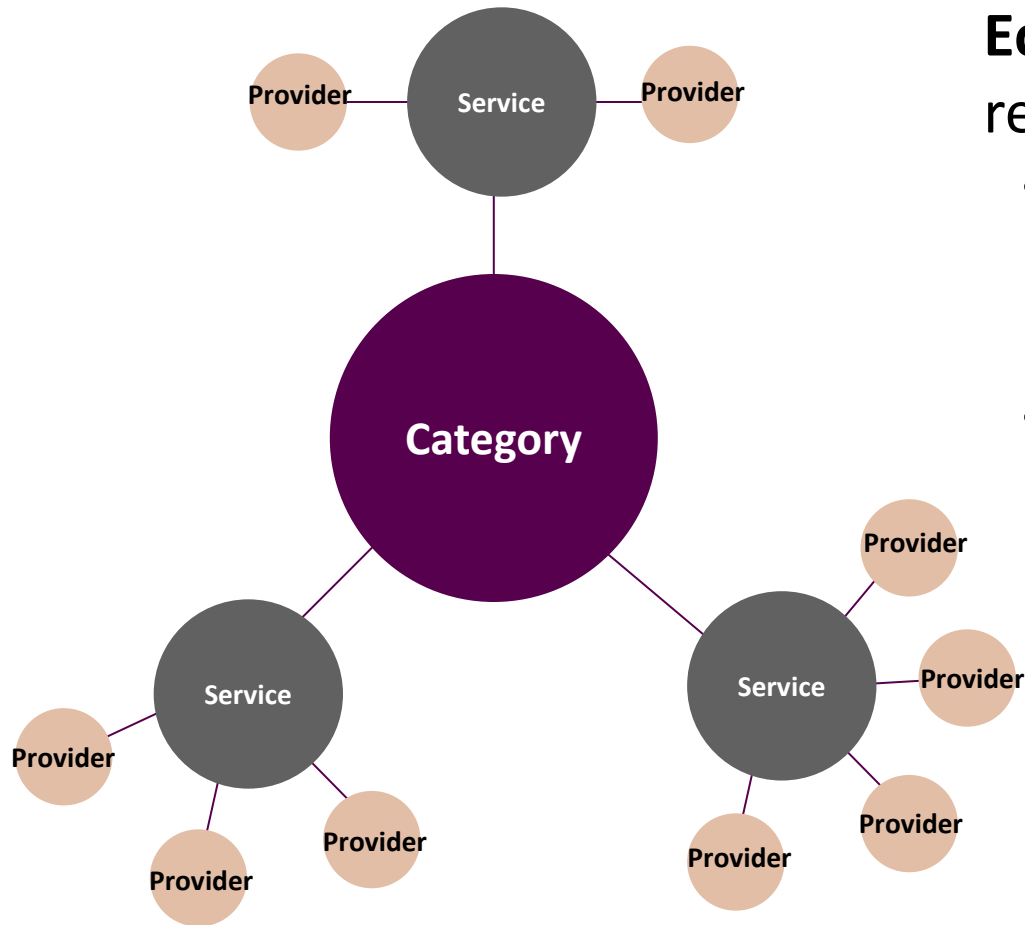
System Change



Why Ecosystem Mapping?

- Takes system change to a practical level
- Uncovers:
 - Aspirations for system
 - Collaboration opportunities
 - Gaps
- Well executed, can:
 - Help with planning, sequencing & prioritization
 - Understand interactions
 - Support alignment
 - Improve funding allocation & decision-making

What Are Ecosystem Maps?



Ecosystem Maps are a visual representation that contain:

- Services and resources a segment of the population needs to thrive (IDEAL)
- The entities that provide those services (REALITY)

Ecosystem Maps Refine Community Strategies by Focusing Resources in Areas of Need

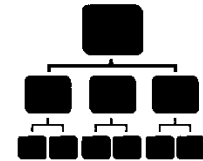
Users of Ecosystem Maps



Gov't/Funder



Coalition

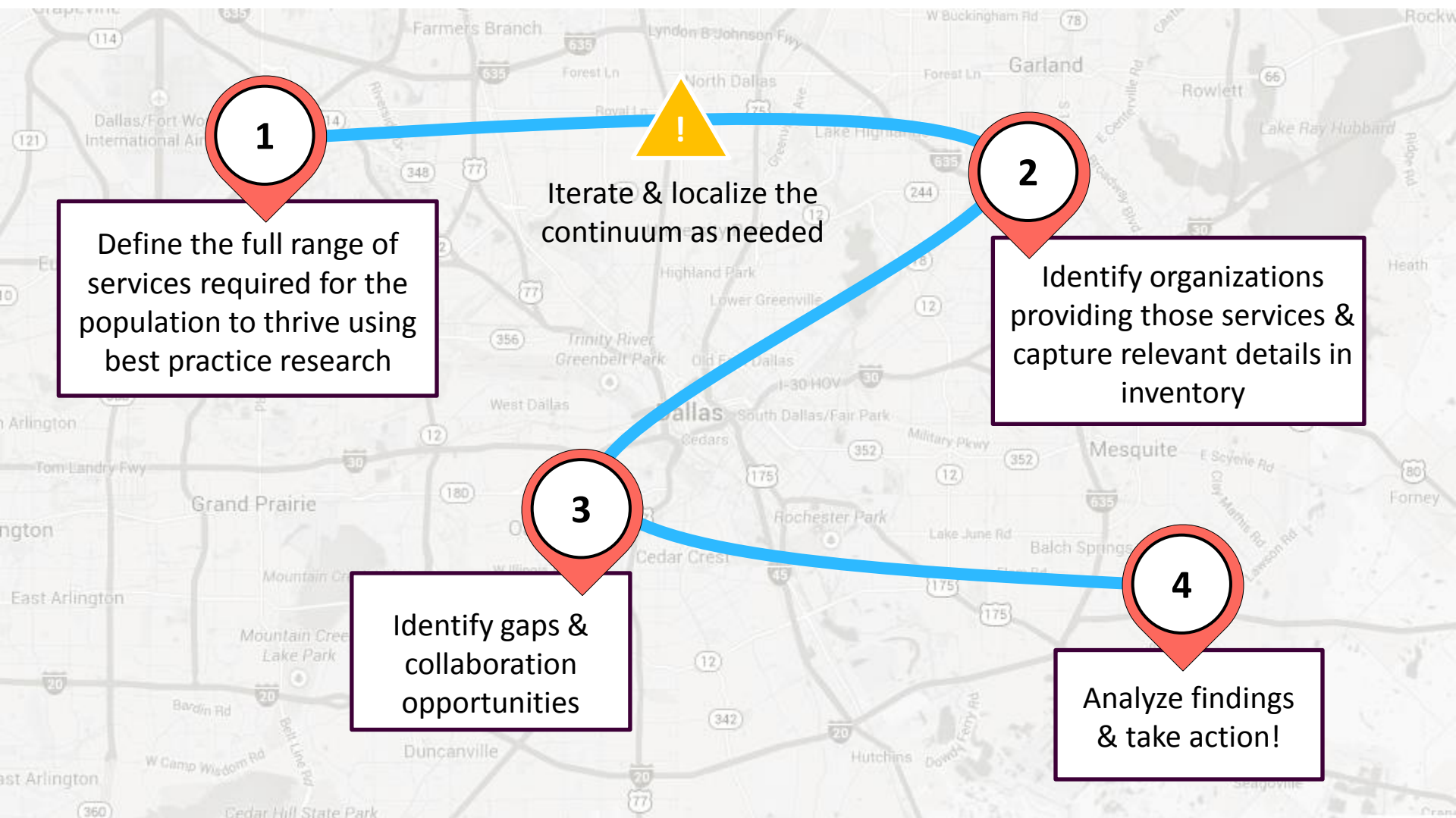


Nonprofit

Benefits of Ecosystem Maps

<i>Benefits of Ecosystem Maps</i>	Gov't/Funder	Coalition	Nonprofit
Define strategy	✓	✓	✓
Award contracts	✓		
Allocate funding and resources	✓	✓	✓
Launch new services	✓	✓	✓
Differentiate existing services	✓	✓	✓
Discontinue services	✓		✓
Identify partners	✓	✓	✓

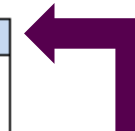
Ecosystem Mapping Methodology



Pairing Ecosystem Map with Inventory Enables Collection of Detailed Information

Health & Benefits

Services	Providers	Description & Volume
Case Management/Social Work/Intake, Information and Referral	<ul style="list-style-type: none"> JCC JFS Cedar Village 	<ul style="list-style-type: none"> Onsite social worker provides referrals to needed services within the community; conducts support groups for the family members of seniors with dementia along with the Alzheimer's Association; conducts assessments of seniors at the JCC to discuss cognitive needs with their families Geriatric Care Management Practice (in a variety of residential settings) – assesses, plans, arranges, coordinates, and monitors all aspects of services to maintain client safely and successfully in their desired environment Information and Referral Line. In person consultation at home or JFS office with older adults and their family caregivers In-patient social services and assessments for residents
Medical Care	<ul style="list-style-type: none"> Cedar Village 	<ul style="list-style-type: none"> Medical, nursing, physical, occupational, and speech therapies with specialty physicians onsite in clinic for audiology, podiatry, dermatology, ophthalmology, optometry, orthopedics, dentistry Respiratory therapy services, psychology, psychiatric services



Contents of Inventory:

1. Providers of services
2. Brief description of services
3. Volume of services



Need help? **211**
Start here.

Pairing Ecosystem Map with Planning Leads to Informed & Aligned Decision-making





Suzanne Smith

 SocialImpactArchitects

 socialtrendspot

 Company/social-impact-architects

 suzanne@socialimpactarchitects.com

 www.socialimpactarchitects.com

About Suzanne Smith

Founder & Managing Director, Social Impact Architects

National Member

- Senior Policy Advisor, Social Enterprise Alliance
- Consultant Member, Society for Organizational Learning
- Research Fellow, Center for the Advancement of Social Entrepreneurship at Duke University

Local Leader

- **Dallas, Texas** - Texas Social Innovation Initiative, Entrepreneurs for North Texas, Junior League, Leadership Dallas/North Texas, and Social Enterprise Alliance North Texas Chapter
- **Cincinnati, Ohio** – Flywheel: Social Enterprise Hub
- **Durham, North Carolina** – Bull City Forward (Social Innovation Initiative) and Social Enterprise Network of the Triangle

Awards & Honors

- Huffington Post's Top 10 social sector blog, 2014
- Dallas Business Journal's 40 Under 40 Award, 2012
- Next Generation Social Entrepreneurs Award, 2010